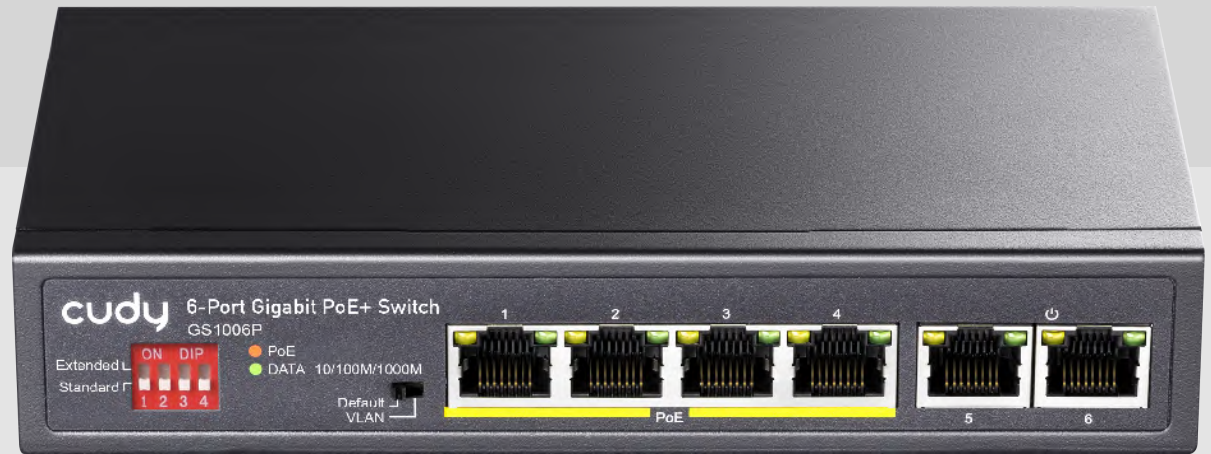




Model

GS1006P

6-Port Gigabit PoE+
Switch with 2 Uplink Ports



1.Product Overview

GS1006P is 6-port 10/100/1000Mbps switch with 4 port PoE(Port1~4). The electrical power and data transmission on the same cable can expand your network to the places where no power lines or outlets, where you can install devices such as APs, IP cameras, or IP phones etc.

In the Extend operation mode, the switch operates on a per-port basis at 10Mbps duplex operation but can support 32W PoE power output over a distance of up to 200 meters overcoming the 100m limit on Ethernet UTP cable. With this brand-new feature, the switch provides an additional solution for 802.3at/af PoE distance extension, thus saving the cost of Ethernet cable installation. Support QoS, when the network overload or congestion, the first four ports according to 1: 2: 4: 8 weight configuration to ensure that important business is not delayed or discarded, to ensure the efficient operation of the network. And the switch supports VLAN function which can improve the network environment and reduces network maintenance costs. It is easy to manage and maintain which can meet a lot of networking environment, such as Business building, Community, Hotel, Office etc.

2. Product Features

1. Complies with IEEE802.3af/at Standard;
2. Supports PoE Power up to 32W for each PoE port;
3. Auto detect power device; will not burned non-standard PoE device or normal PoE switch;
4. Supports IEEE802.3 x full duplex flow control and Backpressure half duplex flow control;
5. Line-speed forwarding, intelligent identification;
6. Supports storage - and- forward for Data exchange;
7. Internal power supply with small case;
8. Support VLAN function;
9. QoS control, Port1-4 port according to 1: 2: 4: 8 configuration;
10. Iron shell, no fan;
11. Support Energy-Efficient Ethernet (EEE) function (IEEE802.3az);
12. Supports port power supply prioritization, guarantee the continuous power supply of key nodes;
13. Extend mode, Single port speed reduction and ensure transmission quality, supporting 200m transmission;

3. Product Specifications

Model	GS1006P
Standard	IEEE802.3、 IEEE802.3u、 IEEE802.3x、 IEEE802.3ab、 IEEE802.3az
PoE standard	IEEE802.3af/at
Interface	6*10/100/1000Mbps RJ45 port
Key function	VLAN&Extend(Port1-4)
PoE port	1-4
PoE Total	35W/65W
Power supply	40W/72W
RJ45 PoE power supply	Mode A Anode1/2 Cathode3/6
PoE output-port	Max 32W
Indicator	PWR、 LNK/ACT、 PoE
Network media	10BASE-T: UTP category 3,4,5 cable (≤100m) 100BASE-TX: UTP category 5, 5e cable (≤100m) 1000BASE-T: UTP category 5, 5e cable (≤100m)
MAC Address Table	4K, Automatic study, automatic updates
jumbo frame	9216 Bytes
Packet buffer	1.5M bit
Transfer Mode	store-and-forward
Packet forwarding rate	8.9Mpps
Bandwidth	12Gbps
Fan	Fanless
Device Dimension	168*93*32mm
Machine weight	<1kg
Input Voltage	DC: 54.5V/1.32A
Operating Temperature	0°C ~ 40 °C
Storage Temperature	-40 °C ~ 70 °C
Operating Humidity	10% ~ 90% non-condensing
Storage Humidity	5% ~ 90% non-condensing
Surge Protection	Differential mode±4KV, Common mode ±6KV
MTBF	>50000 hours
Electrostatic standard	Contact 4KV,air 6KV

CE DECLARATION OF CONFORMITY

For the following equipment:

Product Name: 6-Port Gigabit PoE+ Switch, 65W

Model Number: GS1006P

Trademark: Cudy

We declare under our own responsibility that the above product satisfies all the technical regulations applicable to the product within the scope of Council Directives:

Directive 2014/30/EU, Directive 2014/35/EU, Directive 2011/65/EU, Directive (EU) 2015/863

The above product is in conformity with the following standards or other normative documents:

EN 55032:2015/A11:2020

EN 55035:2017/A11:2020

EN IEC 61000-3-2:2019/A1:2021

EN 61000-3-3: 2013/A2:2021

EN IEC 62368-1:2020+A11:2020

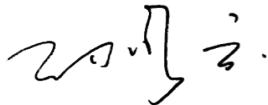
Person responsible for making this declaration:

Sun Qiaoyun

Regulatory Compliance Manager

Place of issue: Shenzhen, China

Date of issue: 2024-03-19



Shenzhen Cudy Technologies Co., Ltd.

Room A606, Gaoxinqi Industrial Park, Liuxianyi Road, Baoan District, Shenzhen, China

www.cudy.com

ΔΗΛΩΣΗ ΣΥΜΜΟΡΦΩΣΗΣ

Για τον ακόλουθο εξοπλισμό:

Όνομα Προϊόντος: 6-Port Gigabit PoE+ Switch, 65W

Αριθμός Μοντέλου: GS1006P

Εμπορικό Σήμα: Cudy

Διακηρύσσουμε με κάθε ευθύνη ότι το παραπάνω προϊόν συμμορφώνεται με όλους τους τεχνικούς κανονισμούς που ισχύουν για το προϊόν, εντός του αντικειμένου των Κοινοτικών Οδηγιών:

Οδηγία 2014/30/ΕΕ, Οδηγία 2014/35/ΕΕ, Οδηγία 2011/65/ΕΕ, Οδηγία (ΕΕ) 2015/863

Το παραπάνω προϊόν βρίσκεται σε συμμόρφωση με τα ακόλουθα πρότυπα ή άλλα έγγραφα συμμόρφωσης

EN 50032:2015+A1:2020 +A11:2020

EN IEC 61000-3-2:2019 + A1: 2021

EN61000-3-3: 2013 + A1:2019 + A2:2021

EN55035:2017 + A11:2020

EN IEC 62368-1:2020 + A11:2020

Υπεύθυνος για τη δήλωση

αυτή: Sun Qiaoyun

Διευθυντής κανονιστικής

συμμόρφωσης Τόπος έκδοσης:

Shenzhen Cudy Technology Co., Ltd.

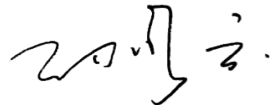
Room A606, Gaoxinqi Industrial Park, Liuxianyi Road, Baoan District, Shenzhen, China

www.cudy.com

cudy

Shenzhen, Κίνα

Ημερομηνία έκδοσης: 2024-03-19

A handwritten signature in black ink, appearing to be in Chinese characters, located below the date.

Shenzhen Cudy Technology Co., Ltd.

Room A606, Gaoxinqi Industrial Park, Liuxianyi Road, Baoan District, Shenzhen, China

www.cudy.com