







Model: WR1300

AC1200

Dual Band Wi-Fi Router

-  Up to 867Mbps + 300Mbps Wi-Fi Speed
-  Powerful Dual-Core Processor
-  VPN Server and VPN Client Support
-  Enhanced Whole Home Coverage

[Datasheet](#)



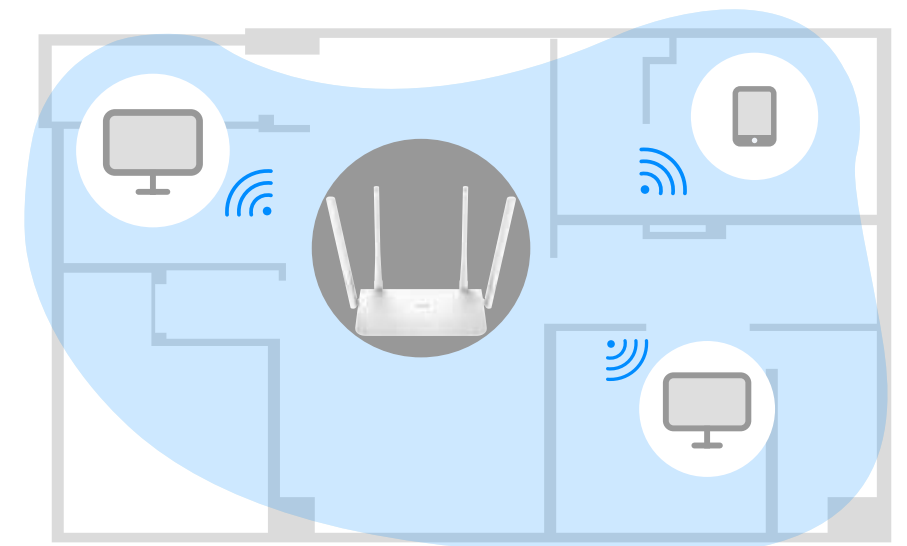


867 Mbps (5 GHz)

300 Mbps (2.4 GHz)

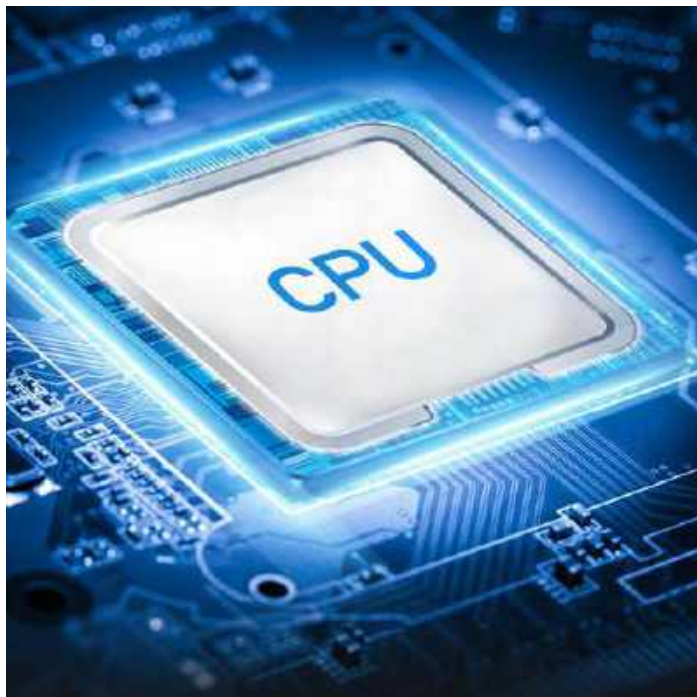
Up to 1.2 Gbps Wi-Fi Speed:
Enjoy smooth streaming,
downloading, and gaming
with extremely fast Wi-Fi-
Speed.

Extensive Coverage

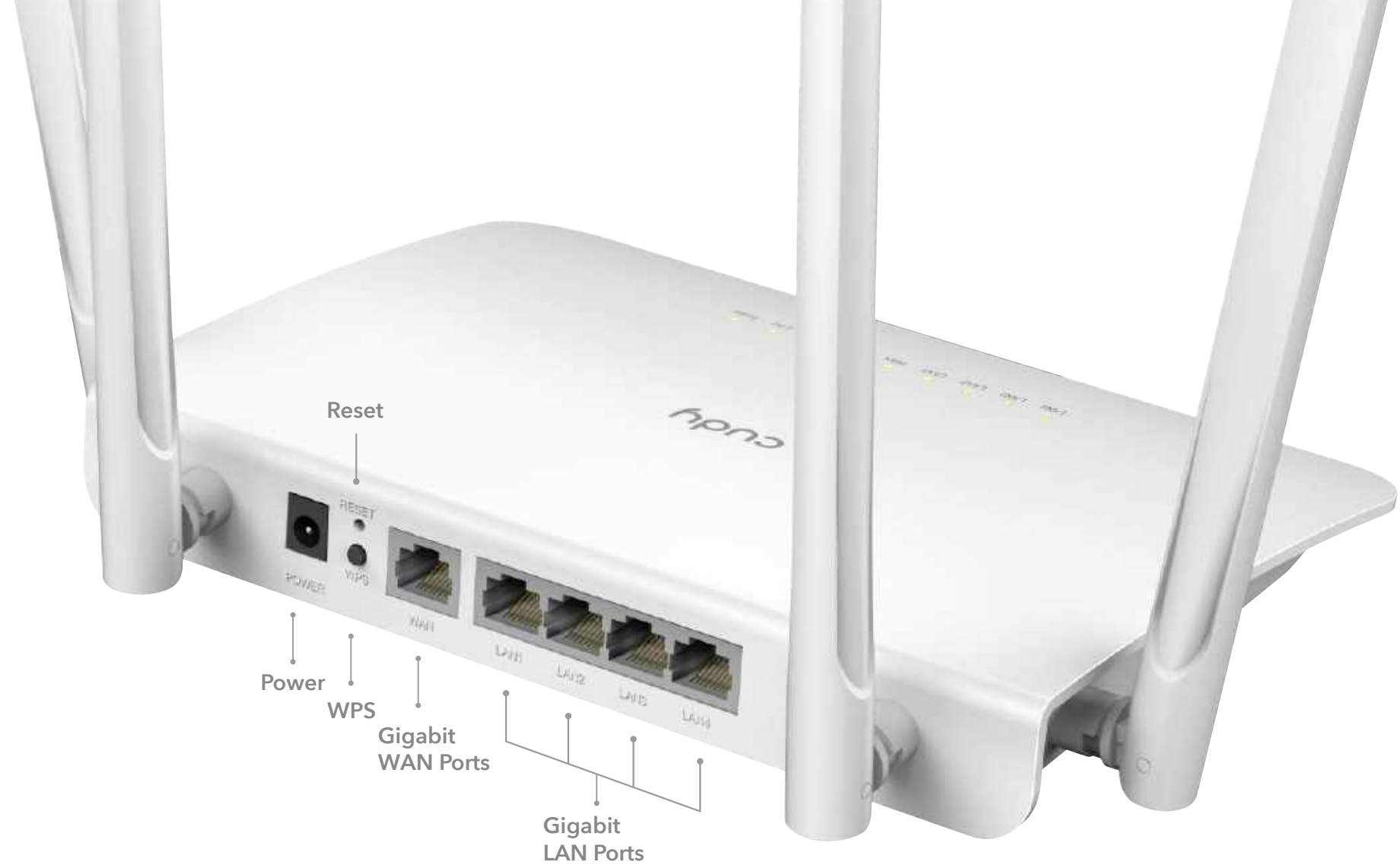




Hardware



16MB Flash + 128MB DDR



Powerful Dual-Core Processor

Powerful Dual-Core CPU ensures smooth 4K UHD streaming to Smart TVs, mobile devices and gaming consoles without buffering.

16MB Flash + 128MB DDR

Large capacity flash/DDR design makes the router stable and reliable, ensuring the continuous operation of the system, and provides more space for the file system.

4 x 5dBi High Gain Antennas

High gain antennas boost sensitivity of the router, create connections over greater distances, providing powerful penetration through walls.

5 x Gigabit Ports

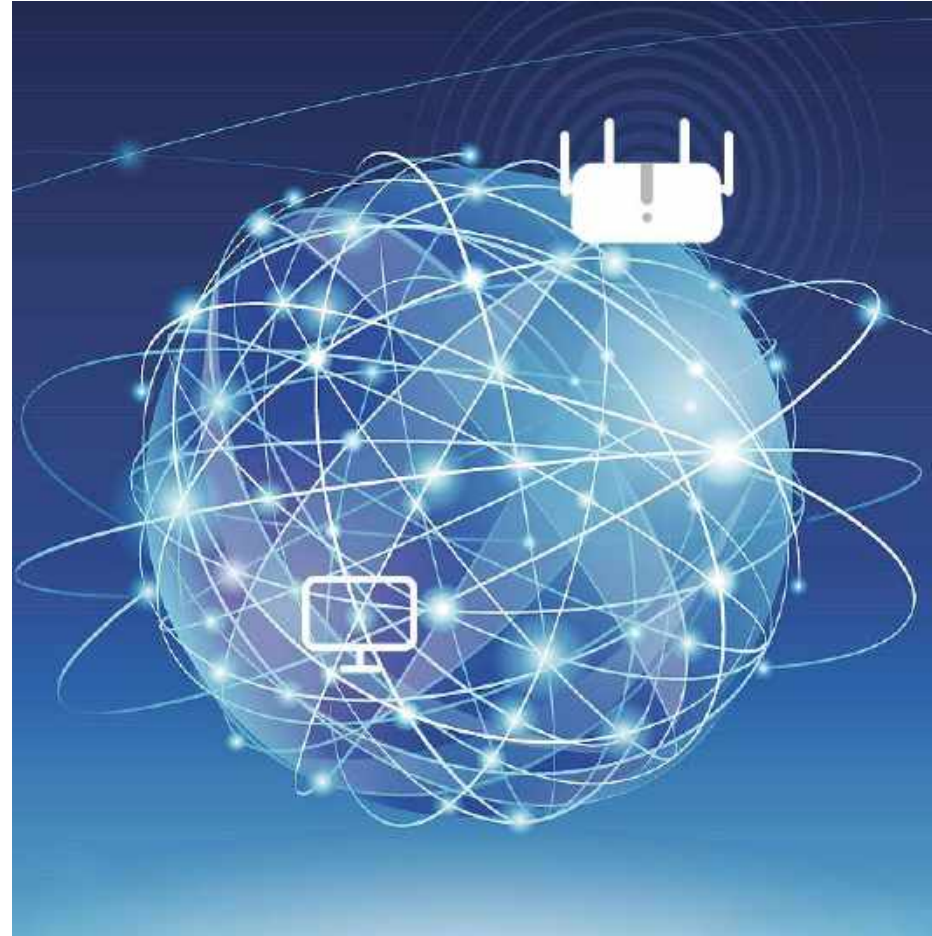
Featured with 5 10/100/1000Mbps ports, greatly expands your network capacity, enabling instant large files transferring.

Software



VPN

With built-in VPN, this router can easily establish a connection to VPN Server to transport all your online data and traffic, securing it with its encryption at the same time.



DDNS

By assigning a custom domain name to your home router's IP address, DDNS function will update automatically as your home IP continues to change. Compatible with 15 more DDNS providers.



Guest Network

Guest Network separate guest access from your family network. Maintain high security across your network to help ensure your privacy is safe while online.

Specifications

- Up to 1.2 Gbps Wi-Fi Speed: Enjoy smooth streaming, downloading, and gaming with extremely fast Wi-Fi Speed.
- Powerful Dual-Core Processor: Powerful Dual-Core CPU ensures smooth 4K UHD streaming to Smart TVs, mobile devices and gaming consoles without buffering.
- Improved Capacity: Large flash/DDR design to improve capacity and efficiency of your network, so more devices can connect without slowing down your Wi-Fi.
- Extensive Coverage: Beamforming and four antennas combine to deliver focused reception to devices far away.
- Pre-installed VPN. With built-in VPN clients, this router can easily establish a connection to VPN Server to transport all your online data and traffic, securing it with its encryption at the same time.
- Dynamic DNS: DDNS function solves the issue of changing residential IP addresses. By assigning a custom domain name to your home router's IP address, DDNS function will update automatically as your home IP continues to change. Compatible with 15 more DDNS providers.

Hardware Features

Processor	Dual-Core CPU
Flash	128Mbit (16MB)
DDR	1Gbit (128MB)
Antenna	4× Fixed Omni-Directional Antennas
Interface	1× 10/100/1000 Mbps WAN Port 4× 10/100/1000 Mbps LAN Ports
Button	WPS Button, Reset Button
External Power Supply	12 V / 1 A
Dimensions (W x D x H)	204.8 x 137. 5 x 38. 3mm

Wireless Features

Wireless Standards	IEEE 802.11ac/n/a 5 GHz IEEE 802.11n/b/g 2.4 GHz
Frequency	5 GHz, 2.4 GHz
Signal Rate	867 Mbps (5 GHz), 300 Mbps (2.4 GHz)
Transmit Power	Compatible with 802.11a/b/g/n/ac Wi-Fi standards CE: <20dBm(2.4 GHz), <23dBm(5.15 GHz~5.25 GHz) FCC:<30dBm(2.4 GHz & 5.15 GHz~5.825 GHz)
Wireless Modes	Enable/Disable Wireless Radio, WMM WEP, WPA/WPA2,
Wireless Functions	WPA-PSK/WPA2-PSK

Software Features

WAN Type	Dynamic IP/Static IP/PPPoE
DHCP	Server, DHCP Client List, Address Reservation
Dynamic DNS	Compatible with 15 more DDNS providers.
Guest Network	2.4 GHz guest network × 1 5 GHz guest network × 1
NAT	Port Forwarding, Port Triggering, UPnP, DMZ
VPN Sever & Client	PPTP/L2TP/OpenVPN/WireGuard/IPSec/Zerotier
Working Mode	Wi-Fi Router/ Wireless Access Point/Wi-Fi Extender/ WISP
CWMP Protocol	TR069 / TR098 / TR111 / TR181
ACS Server Compatibility	GenieACS, OpenACS
Management	Access Control, Local Management, Remote Management, Wake on LAN
TTL	Extend/Spoof/Custom
DNS	Cloudflare/Google/NextDNS/Custom
VLAN	Tag VLAN / IPTV
Internet Protocols	IPv4 / IPv6
IPv6	Relay Dynamic(SLAAC/DHCPv6) Static (Fixed IP) Passthrough MAP-E (Dual-stack) DS-Lite (Dual-stack)

Others

Package	AC1200 Wi-Fi Router
Contents	Power Adapter RJ45 Ethernet Cable Quick Installation Guide
System	Microsoft Windows 98SE/NT/2000/XP/Vista™/7/8/8.1/10/11,
Requirements	MAC OS, NetWare, UNIX or Linux Firefox 12.0, Chrome 20.0, Safari 4.0, or other Java-enabled browser Cable or DSL Modem Subscription with an internet service provider (for internet access)

CE DECLARATION OF CONFORMITY

For the following equipment:

Product Name: AC1200 Dual Band Wi-Fi Router

Model Number: WR1300

Trademark: Cudy

We declare under our own responsibility that the above product satisfies all the technical regulations applicable to the product within the scope of Council Directives:

Directive 2014/53/EU, Directive 2011/65/EU, Directive (EU) 2015/863

The above product is in conformity with the following standards or other normative documents:

EN 301 489-1 V2.2.3 EN 301 489-17 V3.2.4 EN 301 489-52 V1.2.1

EN 55032: 2015+A11:2020

EN 55035: 2017+A11:2020

EN50663: 2017 EN50566: 2017

EN62209-2: 2010+A1:2019

EN 62479: 2010

EN 300 328 V2.2.2 ETSI EN 301 893 V2.1.1

EN 301 908-1 V15.1.1 EN 301 908-13 V13.2.1

EN IEC 62368-1: 2020+A11: 2020

IEC 62321-1:2013, IEC 62321-2:2021,

IEC 62321-3-1:2013, IEC 62321-5:2013,

IEC 62321-4:2013+AMD1:2017 CSV,

IEC 62321-6:2015, IEC 62321-7-1: 2015,

IEC 62321-7-2:2017, IEC 62321-8:2017

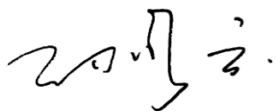
Person responsible for making this declaration:

Sun Qiaoyun

Regulatory Compliance Manager

Place of issue: Shenzhen, China

Date of issue: 2022-8-23



Shenzhen Cudy Technology Co., Ltd.

Room A606, Gaoxinqi Industrial Park, Liuxianyi Road, Baoan District, Shenzhen, China

www.cudy.com

ΔΗΛΩΣΗ ΣΥΜΜΟΡΦΩΣΗΣ

Για τον ακόλουθο εξοπλισμό:

Όνομα Προϊόντος: AC1200 Dual Band Wi-Fi Router

Αριθμός Μοντέλου: WR1300

Εμπορικό Σήμα: Cudy

Διακηρύσσουμε με κάθε ευθύνη ότι το παραπάνω προϊόν συμμορφώνεται με όλους τους τεχνικούς κανονισμούς που ισχύουν για το προϊόν, εντός του αντικειμένου των Κοινοτικών

Οδηγιών:

Οδηγία 2014/53/ΕΕ, Οδηγία 2011/65/ΕΕ, Οδηγία (ΕΕ) 2015/863

Το παραπάνω προϊόν βρίσκεται σε συμμόρφωση με τα ακόλουθα πρότυπα ή άλλα έγγραφα συμμόρφωσης

EN 301 489-1 V2.2.3 EN 301 489-17 V3.2.4 EN 301 489-52 V1.2.1

EN 55032: 2015+A11:2020

EN 55035: 2017+A11:2020

EN50663: 2017 EN50566: 2017

EN62209-2: 2010+A1:2019

EN 62479: 2010

EN 300 328 V2.2.2 ETSI EN 301 893 V2.1.1

EN 301 908-1 V15.1.1 EN 301 908-13 V13.2.1

EN IEC 62368-1: 2020+A11: 2020

IEC 62321-1:2013, IEC 62321-2:2021,

IEC 62321-3-1:2013, IEC 62321-5:2013,

IEC 62321-4:2013+AMD1:2017 CSV,

IEC 62321-6:2015, IEC 62321-7-1: 2015,

IEC 62321-7-2:2017, IEC 62321-8:2017

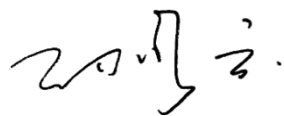
Υπεύθυνος για τη δήλωση αυτή:

Sun Qiaoyun

Διευθυντής κανονιστικής συμμόρφωσης

Τόπος έκδοσης: Shenzhen, Κίνα

Ημερομηνία έκδοσης: 2022-8-23



Shenzhen Cudy Technology Co., Ltd.

Room A606, Gaoxinqi Industrial Park, Liuxianyi Road, Baoan District, Shenzhen, China

www.cudy.com