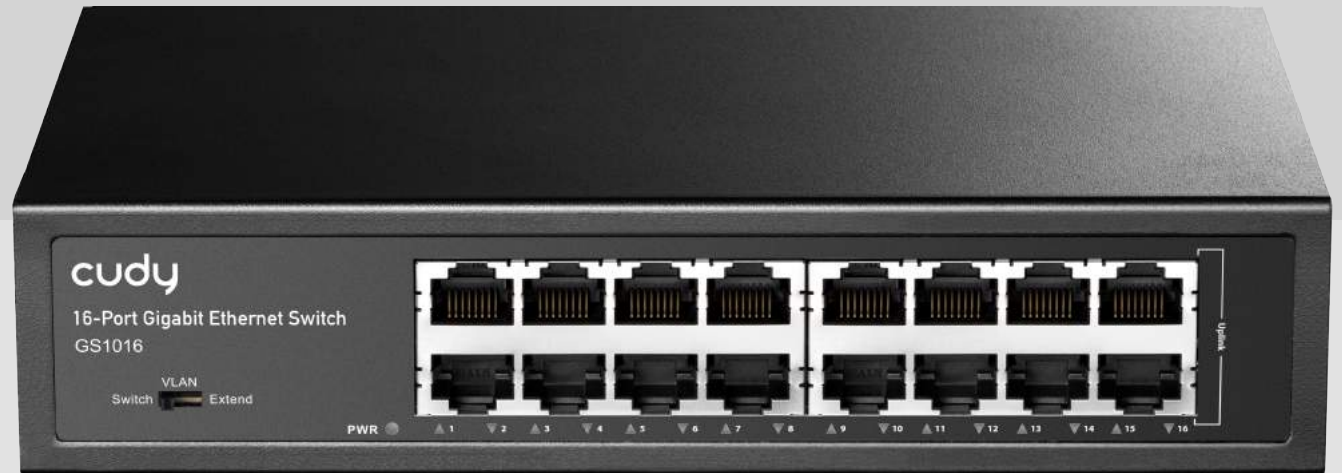




Model

GS1016

16-Port Gigabit Ethernet Switch



1. Features

1. Conforms to IEEE802.3, IEEE 802.3u, IEEE 802.3ab
2. Provides 16 10/100/1000Base-T ports
3. High back-plane bandwidth 32 Gbps
4. IEEE802.3x Flow control
5. The switch supports one-key function conversion, currently supports three modes, normal mode, VLAN mode, extend 250m mode:

Normal: Normal mode, no special function

VLAN : 1-14 port will not communicate with each other only communicate with uplink port 15-16. It will control the Net storm, protect the information security.

Extend 250m: 1-14 port can transmit 250 meters, when using Cat5e/6 network cable or better network cable, port 15-16 has no special function

2. Product Specifications

Item		Description	
Power	Power Supply	Built-in powersupply	
	Voltage Range	Ac100~ 240V	
	Consumption	<15W	
Ethernet	Speed	1-24 Port: 10/100/1000Mbps	
	Transmission Distance	100Meter (328ft)	
Network Switch	Ethernet Standard	IEEE 802.3/802.3u / 802.3ab	
	Switching capacity	32G	
	Transfer Rate	14,880 pps for 10Mbps 148,800 pps for 100Mbps 148,8000 pps for 100Mbps	
	MACAddress	8K MAC address table	
LINK/ACT	On	Green	The port is connecting
	Blinks	-	The port is receiving or transmitting data
	Off	-	The port is not linked successfully with the device
Working Environment	Working Temperature	0C~40C	
	Storage Temperature	-40C~70C	
	Humidity Non condensing	0~85%	
Mechanical	Dimension L* W * H	200 x 118 x 44mm	
	Color	Black	

CE DECLARATION OF CONFORMITY

For the following equipment:

Product Name: 16-Port Gigabit Ethernet Switch

Model Number: GS1016

Trademark: Cudy

We declare under our own responsibility that the above product satisfies all the technical regulations applicable to the product within the scope of Council Directives:

Directive 2014/30/EU, Directive 2014/35/EU, Directive 2011/65/EU, Directive (EU) 2015/863

The above product is in conformity with the following standards or other normative documents:

EN 50032:2015+A1:2020 +A11:2020

EN IEC 61000-3-2:2019 + A1: 2021

EN61000-3-3: 2013 + A1:2019 + A2:2021

EN55035:2017 + A11:2020

EN IEC 62368-1:2020 + A11:2020

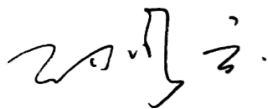
Person responsible for making this declaration:

Sun Qiaoyun

Regulatory Compliance Manager

Place of issue: Shenzhen, China

Date of issue: 2022-10-10



ΔΗΛΩΣΗ ΣΥΜΜΟΡΦΩΣΗΣ

Για τον ακόλουθο εξοπλισμό:

Όνομα Προϊόντος: 16-Port Gigabit Ethernet Switch

Αριθμός Μοντέλου: GS1016

Εμπορικό Σήμα: Cudy

Διακηρύσσουμε με κάθε ευθύνη ότι το παραπάνω προϊόν συμμορφώνεται με όλους τους τεχνικούς κανονισμούς που ισχύουν για το προϊόν, εντός του αντικειμένου των Κοινοτικών Οδηγιών:

Οδηγία 2014/30/ΕΕ, Οδηγία 2014/35/ΕΕ, Οδηγία 2011/65/ΕΕ, Οδηγία (ΕΕ) 2015/863

Το παραπάνω προϊόν βρίσκεται σε συμμόρφωση με τα ακόλουθα πρότυπα ή άλλα έγγραφα συμμόρφωσης

EN 50032:2015+A1:2020 +A11:2020

EN IEC 61000-3-2:2019 + A1: 2021

EN61000-3-3: 2013 + A1:2019 + A2:2021

EN55035:2017 + A11:2020

EN IEC 62368-1:2020 + A11:2020

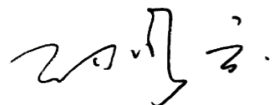
Υπεύθυνος για τη δήλωση αυτή:

Sun Qiaoyun

Διευθυντής κανονιστικής συμμόρφωσης

Τόπος έκδοσης: Shenzhen, Κίνα

Ημερομηνία έκδοσης: 2022-10-10



Shenzhen Cudy Technology Co., Ltd.

Room A606, Gaoxinqi Industrial Park, Liuxianyi Road, Baoan District, Shenzhen, China

www.cudy.com